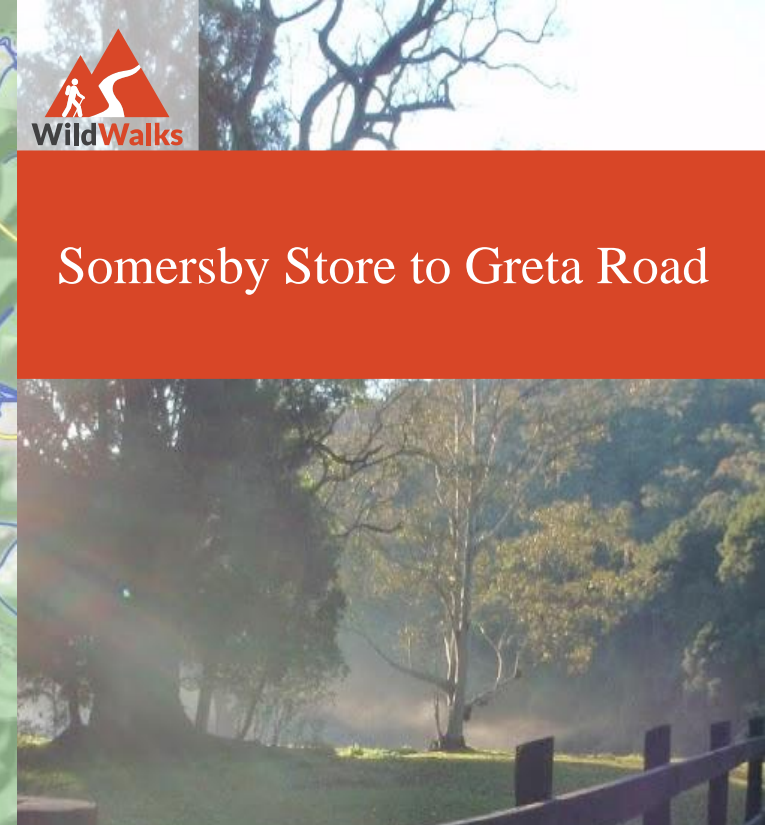
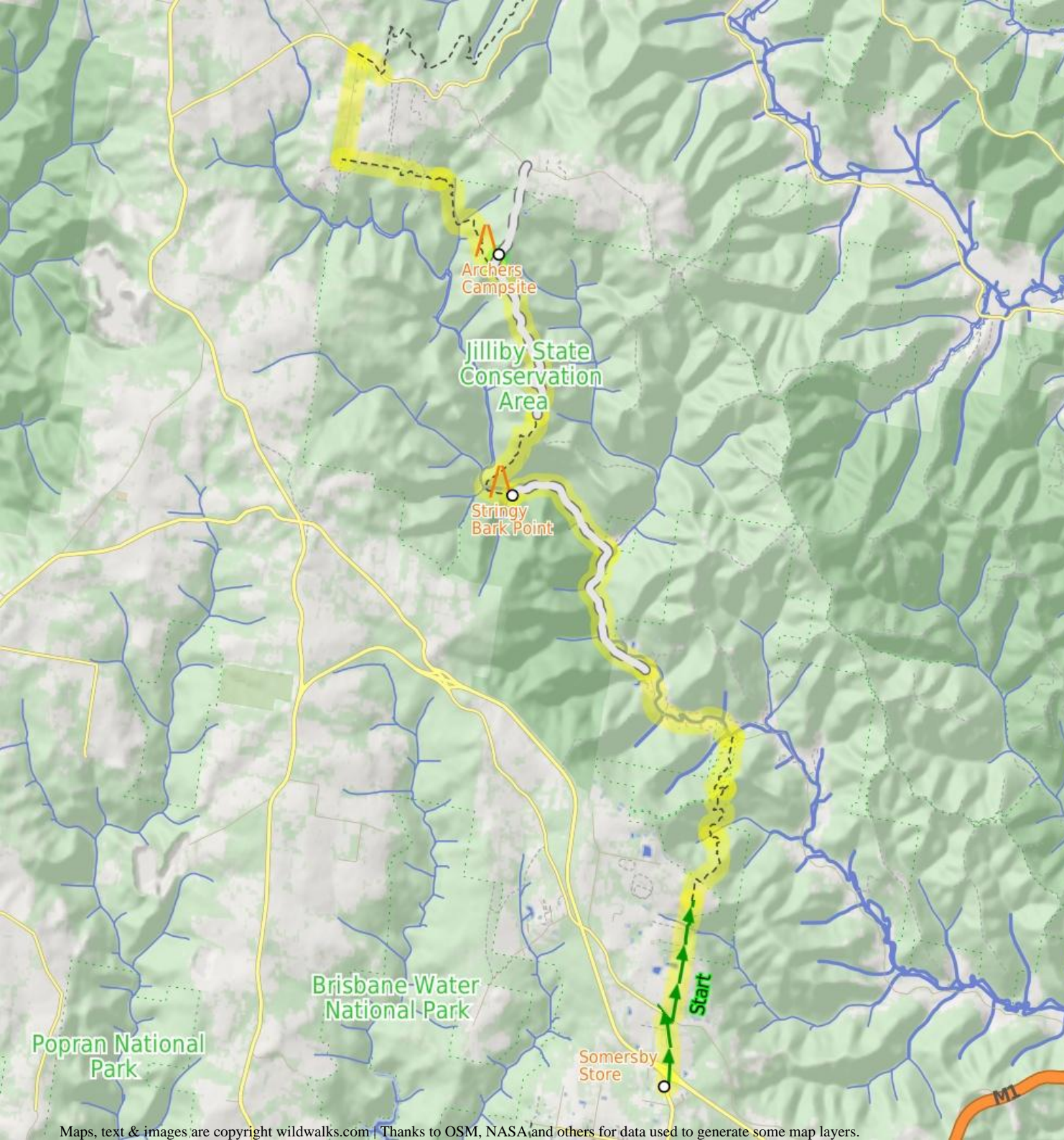


Somersby Store to Greta Road



8 hrs

Hard track

21.1 km One way

▲ 924m

4

This section of the Great North Walk starts from the Somersby General Store and winds north, through the Jiliby State Conservation Area, and finishes at the corner of Greta Road and Cherry Lane. At just under 20km, this full day walk explores the Palm Grove, Hidden Valley and Ourimba Creek tracks, winding around the Tuggerah Lake field archery range and following the outside edge of a farming property.

340m

29m

Jiliby State Conservation Area

Somersby Store

Somersby Store offers a good place to have lunch or pick up the basic food supplies. The store serves hot food including burgers, chips, pies etc and cold drinks. Opening hours are 6am - 6pm Monday to Friday and 6.30am to 4pm on Saturdays (closed Sundays). There is a pay phone and a bus stop however services are limited to two buses a day. Contact details are (02)4372 1269, at 841 Wisemans Ferry Road Somersby, NSW 2250. The store owners are happy for you to phone ahead. If you are a large group you can order ahead to save the stress. I always encourage people to use local stores like this on track, but since it is a small store it is worth phoning ahead to see what they have what you want in stock.

Stringy Bark Point

This campsite is in a small clearing at Stringy Bark Point, just on the southern side of the bridge. This campsite provides room for a small campfire and a few tents. Water is usually available from the creek running by the campsite, please treat before drinking.

Archers Campsite

This informally named campsite is found in Jiliby State Conservation Area, and is used regularly by members of the Tuggerah Lake Field Archers club. This is a basic campsite with a water tank and shed used for hanging shower water bags. The large open camping area has a few existing fire scars and a few flat grassy areas. (There are other facilities 150m further north along the dirt trail at the club house.)

Before You walk

Bushwalking is fun and a wonderful way to enjoy our natural places. Sometimes things go bad, with a bit of planning you can increase your chance of having an enjoyable and safer walk. Before setting off on your walk check

- 1) Weather Forecast ([BOM Hunter District](#))
- 2) Fire Dangers ([Greater Sydney Region](#))
- 3) Park Alerts ([Jiliby State Conservation Area](#))
- 4) Research the walk to check your party has the skills, fitness and equipment required
- 5) Agree to stay as a group and not leave anyone to walk solo

Think before you TREK

The 'Think before you TREK' program developed by NSW Police & NPWS promotes the benefits of planning ahead for your bushwalking trip by using an easy to remember acronym:

- T** Take adequate supplies of food, water, navigation and first aid equipment.
- R** Register your planned route and tell friends and family when you expect to return.
- E** Emergency beacon (PLB's) should be carried on walks with significant gaps in mobile coverage (check terrain profile).
- K** Keep to your planned route and follow the map and walking trails.

Topo Maps

The maps provided on wildwalks are helpful, but there are times where you may need maps covering a broader area. Maps that cover this walk include;

1:25 000 Map Series:91314S KULNURA, 91313N MANGROVE, 91312N WYONG

1:100 000 Map Series:9131 GOSFORD

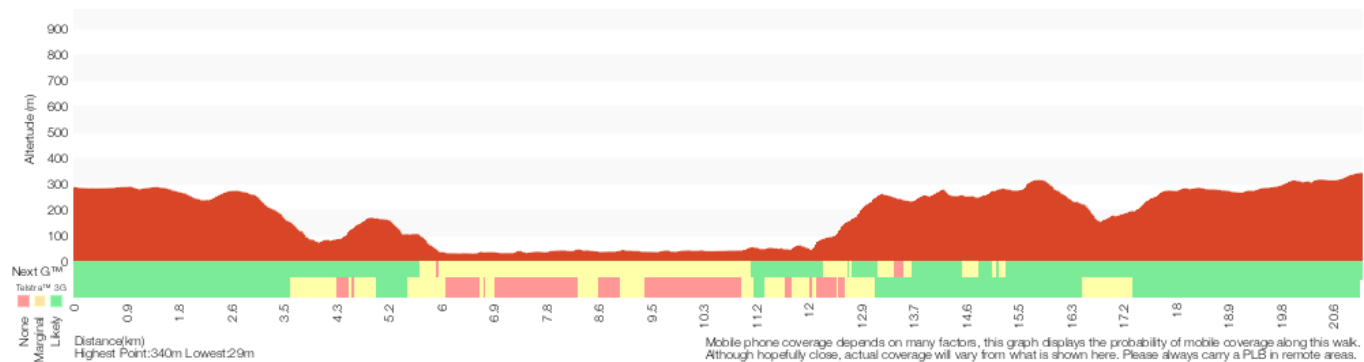
Grade

This walk has been graded using the AS 2156.1-2001. The overall grade of the walk is determined by the highest classification along the whole track.



**Grade 4/6
Hard track**

Length	21.1 km One way
Time	8 hrs
Quality of track	Rough track, where fallen trees and other obstacles are likely (4/6)
Signs	Minimal directional signs (4/6)
Experience Required	Moderate level of bushwalking experience recommended (4/6)
Weather	Forecast, unforecast storms and severe weather may impact on navigation and safety (4/6)
Infrastructure	Limited facilities (such as cliffs not fenced, significant creeks not bridged) (4/6)



Are you ready to have fun?

Please ensure you and your group are well prepared and equipped for all possible hazards and delays. Check park closures, weather information and Fire Danger Rating before setting out. Optional side trips and alternate routes noted are not included in this walk's overall grade, length or time estimate. Please allow extra time for resting and exploring areas of interest. The authors, staff and owners of wildwalks take care in preparing this information but will not accept responsibility for any inconvenience, loss or injury you may experience. Please take care, have fun - Happy Walking.

Getting there You can get to Somersby Store (gps: -33.3581, 151.2903) by car or bus. Bus: A bus service runs along Wisemans Ferry Rd passing Somersby store. The service runs between Gosford and Spencer only a few times a day. Please check timetable for more info or Phone Busway on (02) 4368 2277. The bus only picks passengers up from Somersby to head to Gosford on the morning runs. Car: There is free parking available.

Traveling by car is the only practical way to get back from Int of Greta Road and power line service trail (gps: -33.2403, 151.248). Car: There is free parking available.

Find up to date and more information including; travel directions, weather, park closures and walker feedback at <http://wild.tl/sstgr>

0 | Somersby Store

Somersby Store offers a good place to have lunch or pick up the basic food supplies. The store serves hot food including burgers, chips, pies etc and cold drinks. Opening hours are 6am - 6pm Monday to Friday and 6.30am to 4pm on Saturdays (closed Sundays). There is a pay phone and a bus stop however services are limited to two buses a day. Contact details are (02)4372 1269, at 841 Wisemans Ferry Road Somersby, NSW 2250. The store owners are happy for you to phone ahead. If you are a large group you can order ahead to save the stress. I always encourage people to use local stores like this on track, but since it is a small store it is worth phoning ahead to see what they have what you want in stock.

0 | Somersby Store

(2.6 km 48 mins) From the Somersby Store, this walk heads north, gently downhill along the side of 'Wisemans Ferry Rd', past the public toilet. After about 120m, this walk crosses an on-ramp then heads over the bridge crossing Peats Ridge Road, then past another on-ramp. The walk continues along Wisemans Ferry Rd for about 700m to then turn sharp right at the three-way intersection, onto 'Dog Trap Rd'. Just over 100m along Dog Trap Rd, this walk turns left into 'Kilkenny Rd'. The walk follows Kilkenny Rd past the rural properties for about 1.2km, where the walk continues along the now dirt road. About 50m after becoming dirt, the road leads across a rock ford that can be extremely slippery when wet. The walk continues up along the dirt road for another 300m to come to the end of the road and a 'Great North Walk' sign, beside 'Illawong' (farm).

2.63 | End of Kilkenny Road

(1.4 km 32 mins) Continue straight: From the northern end of Kilkenny Road next to 'Illawong' (farm), this walk follows the 'The Great North Walk' sign along the management trail, between the two farms. After about 300m, the trail leads to a clearing, where this walk turns right to follow the GNW arrow post along track beside the fence line (keeping the paddock on your right) for about 70m. The walk then turns left and follows the 'The Great North Walk' sign down the hill. The track leads steeply at first and become progressively less steep as the walk heads down the ridge line, until almost flattening out about 400m after leaving the farm. The track then bends left and winds steeply down the side of the ridge, down a series of rock steps for about 600m, leading into a dense moist rain forest. The track passes some wonderful examples of bird's nest ferns (*Asplenium australasicum*) before the

last little walk down to the rocky intermittent creek. This walk then crosses the creek in the mossy, cool and moist valley.

4.01 | creek crossing

(1 km 28 mins) Continue straight: From beside the creek, this walk follows the GNW arrow post uphill, using the series of rock steps. The track leads uphill, passing some notably large trees over about 120m to then turn right onto a leafy trail. Here the walk crosses an ephemeral creek then continues along the leafy trail in the shaded rainforest. After about 250m, the walk turns left, following the 'Great North Walk' sign gently up along a narrow track for about 60m to pass a large strangler fig tree. Just past the fig, this track begins to climb steeply up a series of rock steps and switch-backs for about 100m to pass along side a rock wall (on your right). Just past the rock wall, this walk ducks under a fallen tree then continues steeply (into the more open forest) up more rock steps and switchback for another 250m, where the track flattens out and comes to the signposted 'Walker Register' tube. After leaving your comments, and having a bit of a read of other people's adventures, this walk turns right and follows the GNW arrow post along the top of the ridge, through a clearing. Here the walk start to lead down along the top of the ridge for about 150m to come to a three-way intersection, marked with a couple of GNW arrow posts (just before a campsite, ahead).

5.05 | Palm Grove Campsite intersection

(990 m 24 mins) Turn left: From the intersection, this walk follows the GNW arrow post north-west, gently down off the side of the ridge (initially keeping the campsite track down to your right). The track leads down along the side of the ridge for about 150m before leading much more steeply down a series of rock steps for about 200m. The track mostly flatten out just before passing a tall fig growing over a large boulder (on your right). Here the track winds more gently downhill for about 150m to pass a couple cabbage palms (*Livistona australis*), then continues to wind fairly steeply down for another 400m where the track mostly flattens out again. Near the end of this 400m, the track leads through a short weedy section before heading down a short embankment to a T-intersection with the dirt Ourimbah Creek Rd, marked with a large 'Ourimbah Valley Trackhead' sign.

6.04 | Ourimbah Valley Trackhead

(1.8 km 32 mins) Turn sharp left: From the 'Ourimbah Valley Trackhead' (on Ourimbah Creek Rd), this walk follows the 'Newcastle' sign downhill along the dirt road. The road soon leads down and across a flat timber vehicle bridge then the road mostly flattens out, winding among the rural properties for almost 300m to pass a 'Palm Grove Nature Reserve' sign and a few 'Hidden Valley' signs. The walk continues along the road for about 700m then comes to the intersection in front of the Hidden Valley property (on your left, not far before another road bridge). This walk continues straight, gently downhill along the wide dirt road to almost immediately pass 'Wombats End' (private road) then cross the flat timber road bridge. After about 400m, the road leads under some high tension power lines then after another 150m of winding past the rural properties, this walk passes a timber 'Hidden Valley' private property shelter and water tank (on your right). A further 100m along the road past this shelter, the walk veers left (ignoring 'Platypus Creek La') to come to a locked gate with a 'Road Closed' sign.

7.88 | Int of Platypus Creek La and Ourimbah Creek Rd

(2 km 36 mins) Continue straight: From the gate (near the intersection of Ourimbah Creek Road and Platypus Creek La), this walk heads up around the locked gate and follows the Ourimbah Creek Rd trail along the side of the valley for about 800m, where it crosses a culverted creek. From here, the walk continues along the clear trail as it gently undulates alongside Ourimbah Creek (which is down the steep bank on your right) for about 1.2km until coming to a three-way intersection, marked with a 'Great North Walk' sign,

just before the gates of 'Forty Acres' property.

9.86 | Forty Acres

(1.8 km 33 mins) Turn left: From the intersection, this walk follows the 'Great North Walk' sign north-east along the clear trail. This trail gently undulates along the side of Ourimbah Creek (which is down the steep bank on your right) for about 1.6km, then passes a campsite with a metal fireplace (on your right). Here the walk continues along the trail for about 100m to head past a track (on your right, that leads down to the sandy creek) and continues along the main trail for another 150m to come to large clearing and campsite, Stringy Bark Point at the end of the trail (marked with a timber and metal footbridge on the right).

11.68 | Stringy Bark Point

This campsite is in a small clearing at Stringy Bark Point, just on the southern side of the bridge. This campsite provides room for a small campfire and a few tents. Water is usually available from the creek running by the campsite, please treat before drinking.

11.68 | Stringy Bark Point

(1.8 km 53 mins) Veer right: From Stringy Bark Point campsite, this walk heads across the timber and metal footbridge (with a small mossy canyon on your right). Once on the other side of the bridge, the old trail gently undulates west through the bush for about 300m where this walk turns right following a GNW arrow post down a few rock steps. The distinct track leads fairly steeply down to find, then cross, the perennial Ourimbah Creek. This creek may become impassable after heavy or prolonged rain. On the other side, the track leads up the bank then gently up through the dense, leafy forest for about 50m, following a series of GNW arrow posts. The track then starts to lead steeply uphill for about 100m and leaves the dense forest, climbing up onto the more open ridge. Here the track mostly flattens out, leading over a rocky area to then come to a large ant hill. The track now leads uphill for about 250m to pass some cabbage palms (*Livistona australis*). The track starts to climb steeply again for about 150m, up some stone steps (and past a rock with a view) to where the track mostly flattens out again for about 60m, coming to a three-way intersection that is marked with a GNW arrow post. Here the walk veers left and follows this old trail steeply uphill for about 130m, before turning left at another GNW arrow post. This track soon bends sharp right and leads up some stone steps then comes to an intersection (with the same old trail). Here the walk leads gently uphill for about 30m, over the a rise (ignoring the faint track on your right), after which the track leads gently down through the tall forest for about 300m and comes to a T-intersection with the dirt Tooheys Rd, marked with a 'The Great North Walk' signpost.

13.51 | Int of GNW and Tooheys Road south

(2.3 km 52 mins) Turn left: From the intersection, this walk follows the 'Camping Area' sign north, down along the wide dirt road. The road soon crosses a saddle and starts to lead uphill, then meanders (quite steeply in places) along the ridge and through a variety of forests for about 2.2km, before passing a 'Caution Archery In Progress At Any Time - Keep to the Main Track' sign. Just over 100m past this sign, the road leads up to an intersection marked with a GNW arrow post, and the signposted GNW track (on your left)

15.81 | Optional sidetrip to Archers Campsite

(160 m 3 mins) Continue straight: From the intersection, this walk follows the GNW arrow post uphill along the wide dirt road. After about 30m, the road bends right (ignoring the trail on the left) and leads gently up for about 150m to pass below the campsite, then come to the signposted intersection with the 'Camping Area' (on your left) At the end of this side trip, retrace your steps

back to the main walk then Veer right.

15.81 | Archers Campsite

This informally named campsite is found in Jilliby State Conservation Area, and is used regularly by members of the Tuggerah Lake Field Archers club. This is a basic campsite with a water tank and shed used for hanging shower water bags. The large open camping area has a few existing fire scars and a few flat grassy areas. (There are other facilities 150m further north along the dirt trail at the club house.)

15.81 | Int of GNW and Tooheys Road north

(1.9 km 48 mins) Turn sharp left: From the intersection, this walk follows the 'Yarramalong' sign along the narrow track (away from the dirt road) following a small ridge. After about 50m this walk turns right, following a GNW arrow post off the side of the ridge. The track now leads down along the side of the hill through the wooded forest mostly fairly gently downhill for 500m to cross a small (usually dry) gully. The track continues a little steeper down the hill among the gymea Lillie and eucalypt forest for just over 150m to pass a notable termite mound. About 150m past this mound the track starts to zig zag and head more steeply downhill for yet another 150m to come to the cool and mossy Dead Horse Creek. Here the walk crosses Dead Horse Creek (this creek may become impassable after prolonged or heavy rain), then follows the GNW arrow post up the side of the hill. The track initially zig zags steeply then more gently up as it generally contours north along the side of the hill for about 250m to cross a small gully and often dry side creek. The track continues along the side of the main valley through the cool and dense wooded forest for just over 250m (where there are a few sections of faint track). Here the track starts to veer left and climb the side, of the valley quiet steeply at times for around 400m, where the forest becomes dryer and more open until the track leads to the side of a large high tension power-line tower.

17.72 | Powerline tower west of Dead Horse Creek

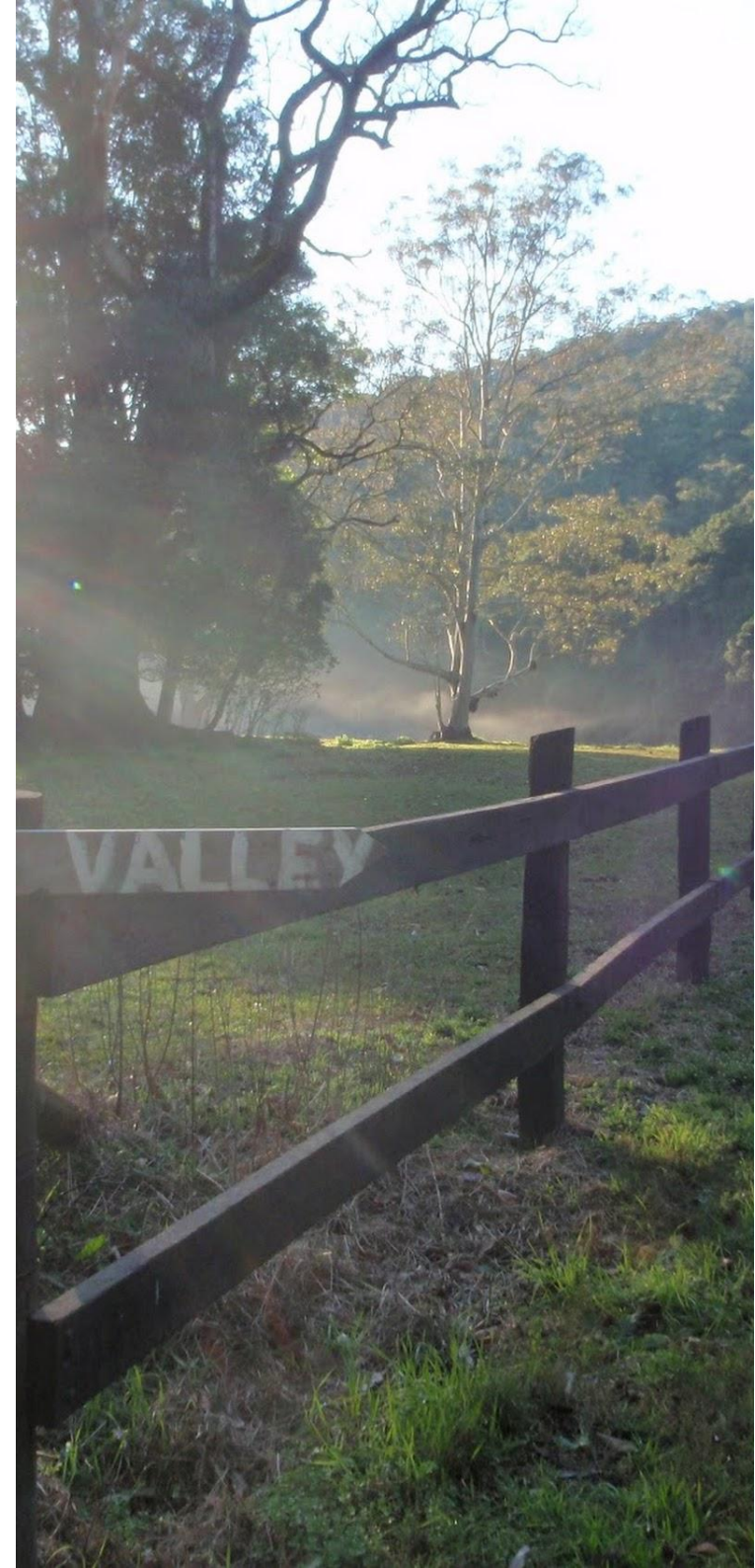
(1.5 km 30 mins) Continue straight: From the high tension powerline tower, this walk heads uphill along the widening track, initially keeping the tower on your left. After 200m this walk turns left at an intersection marked with a "private Property" sign, following a GNW arrow post. This walk continues along the track through the scribbly gum forest for about 70m to then continue straight ahead at four-way intersection (with a wider trail). From here this walk continues through the wooded forest for another 400m to where the view open up as the track passes through a 150m section of heath (ignoring a few fainter side tracks). Now the track leads back through a lightly wooded forest for another 250m to come to a clear intersection with a wider management trail, at the corner of a fence. From here, this walk continue straight, following the track along the side of the fence (keeping the fence to your right) for 400m where the track leads under a set of high tension power lines, beside some farm land. Continuing along the fence line the track soon leads across a section of timber duckboard then after another 100m crosses a small flat timber bridge (over a small sandy creek). Just another 80m later the track leads up to a locked gate and to a T-intersection with Cherry Lane, marked with a few GNW arrows.

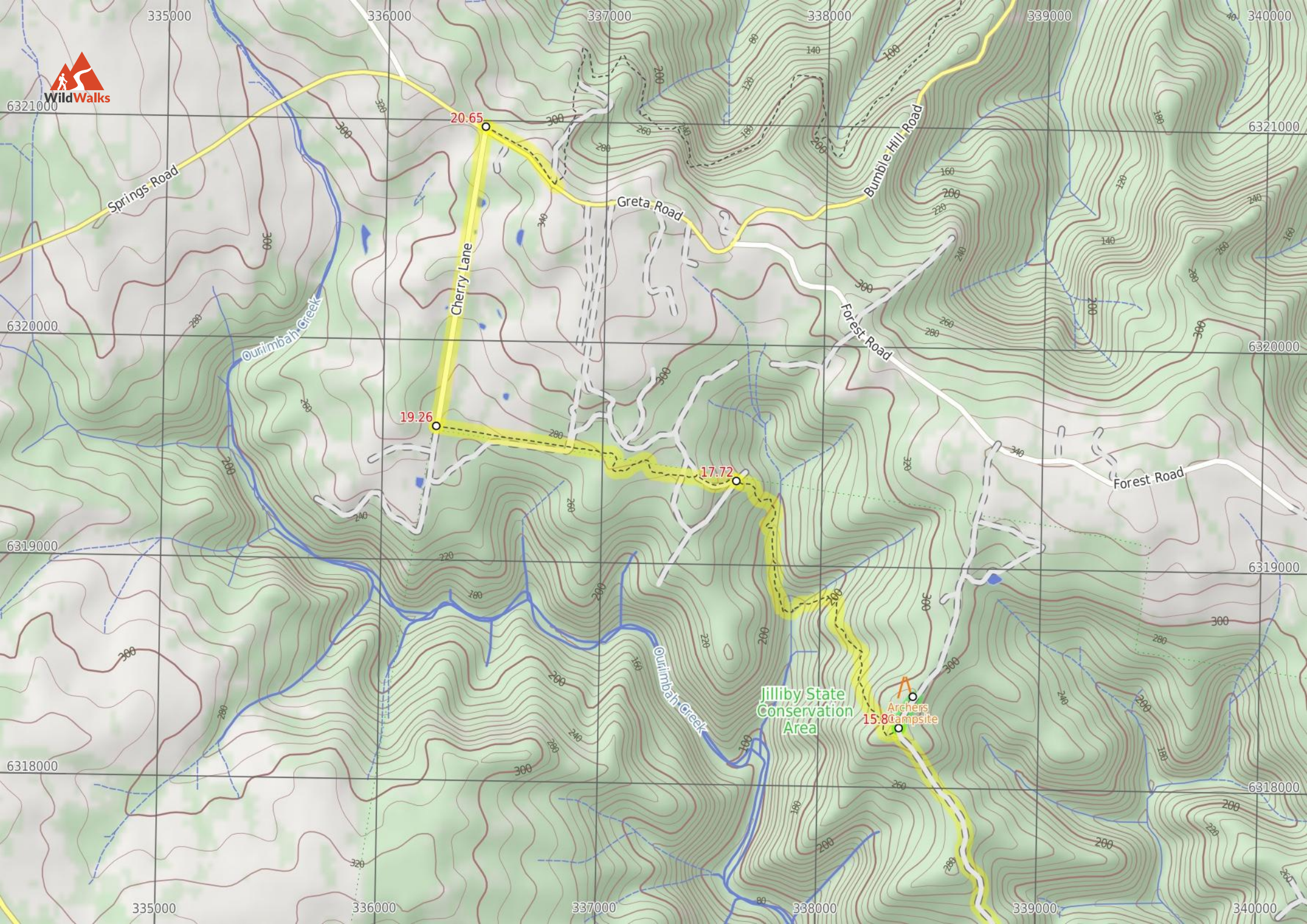
19.26 | Int of GNW and Cherry Lane

(1.4 km 27 mins) Turn right: From the intersection, this walk follows the GNW arrow post gently uphill along Cherry Lane, a gravel road. After 800m this walk continues straight ahead passing an intersection at the top of the hill. From here the road leads downhill for about 400m to pass a notable dam close to the road (on your right). Now the walk leads gently up along the gravel road for another 250m to a T-intersection with the sealed 'Greta Rd' marked with a 'The Great North Walk' signpost (on your right).

20.65 | Int of Greta Road and Cherry Lane

(430 m 9 mins) Turn right: From the intersection, this walk follows the 'The Great North Walk' sign gently uphill along the grassy verge (under the power lines) keeping Greta Road just to your left. After 120m this walk crosses a driveway and continues along side the road for almost 250m to near the top of the hill, just before the high tension power lines. Here the walk turns left to cross the road to find a 'Great North Walk' signposted intersection beside a locked gate and stile.





20.65

19.26

17.72

15.80
Archers
Campsite

Jillyby State
Conservation
Area

Cherry Lane

Greta Road

Bumble Hill Road

Forest Road

Forest Road

Ourimbah Creek

Ourimbah Creek

Springs Road

335000

336000

337000

338000

339000

340000

6321000

6321000

6320000

6320000

6319000

6319000

6318000

6318000

335000

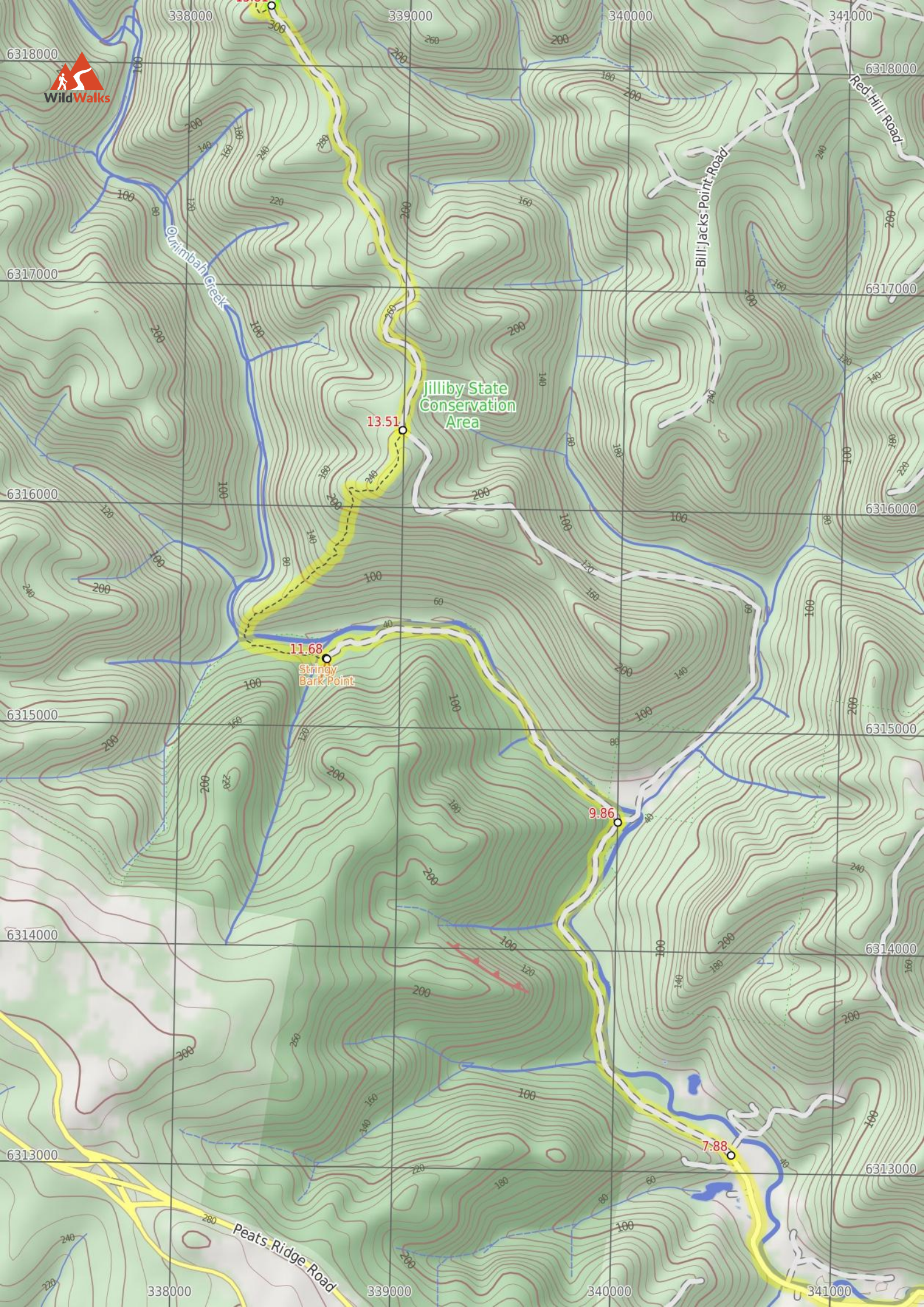
336000

337000

338000

339000

340000



Jiliby State Conservation Area

11.68
Stringy Bark Point

13.51

9.86

7.88

Ounimbah Creek

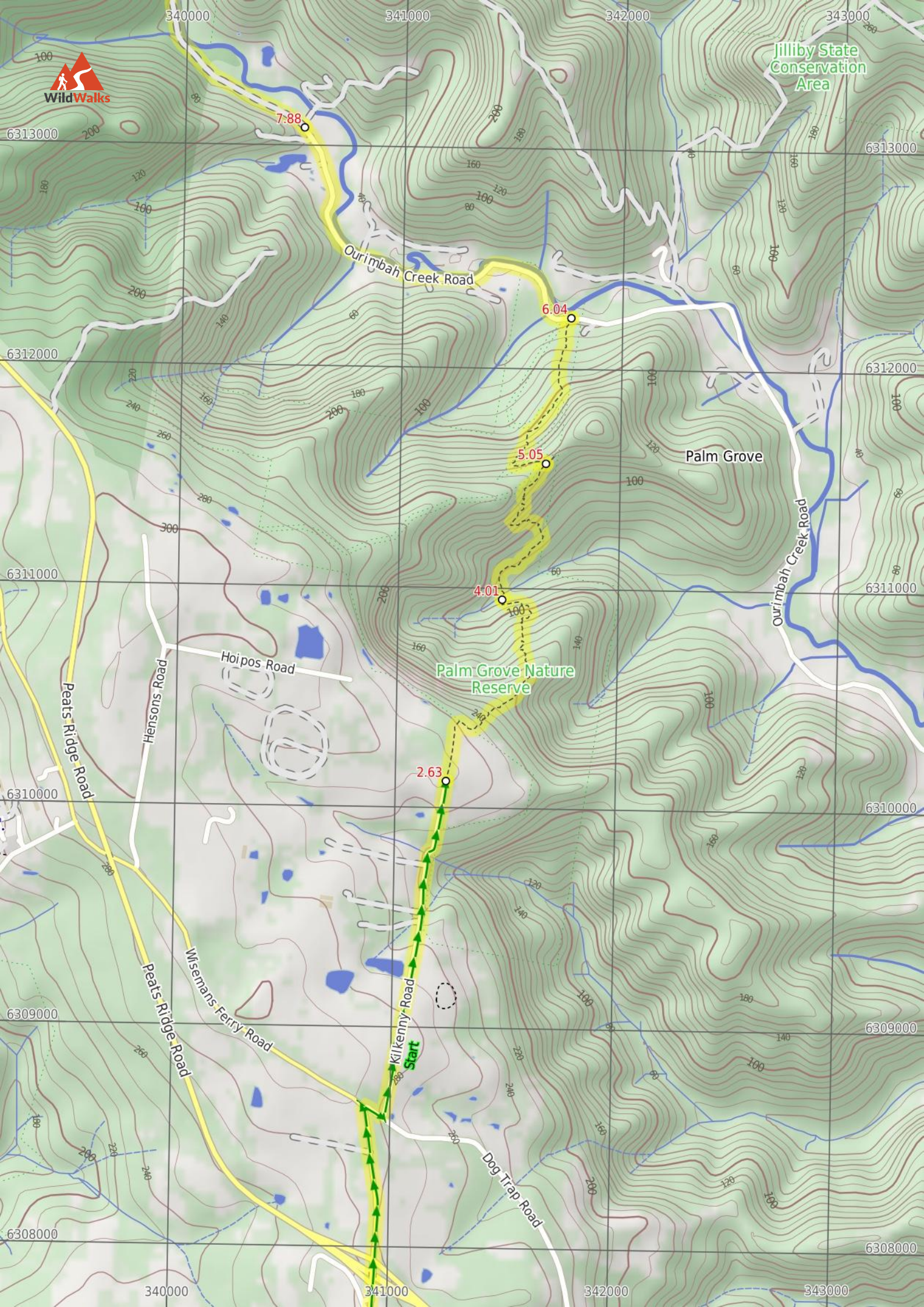
Bill Jacks Point Road

Red Hill Road

Peats Ridge Road



Jilliby State Conservation Area



Summary navigation sheet for the Somersby Store to Greta Road



km	From	Up/Dwn	Length	Initial directions (Use full tracknotes and maps for more detail)
0.00	Somersby Store -33.3581,151.2903 (GR Wyong, 409077)	54 -69	2.6 km 48 mins	From the Somersby Store, this walk heads north, gently downhill along the side of 'Wisemans Ferry Rd', past the public toilet.
2.63	End of Kilkenny Road -33.3364,151.294 (GR Wyong, 412101)	11 -207	1.4 km 32 mins	Continue straight: From the northern end of Kilkenny Road next to 'Illawong' (farm), this walk follows the 'The Great North Walk' sign along the management trail, between the two farms.
4.01	creek crossing -33.329,151.2967 (GR Wyong, 415109)	114 -25	1 km 28 mins	Continue straight: From beside the creek, this walk follows the GNW arrow post uphill, using the series of rock steps.
5.05	Palm Grove Campsite intersection -33.3234,151.2989 (GR Wyong, 417116)	15 -143	990 m 24 mins	Turn left: From the intersection, this walk follows the GNW arrow post north-west, gently down off the side of the ridge (initially keeping the campsite track down to your right).
6.04	Ourimbah Valley Trackhead -33.3174,151.3001 (GR Wyong, 418122)	30 -25	1.8 km 32 mins	Turn sharp left: From the 'Ourimbah Valley Trackhead' (on Ourimbah Creek Rd), this walk follows the 'Newcastle' sign downhill along the dirt road.
7.88	Int of Platypus Creek La and Ourimbah Creek Rd -33.3096,151.2871 (GR Wyong, 405131)	39 -43	2 km 36 mins	Continue straight: From the gate (near the intersection of Ourimbah Creek Road and Platypus Creek La), this walk heads up around the locked gate and follows the Ourimbah Creek Rd trail along the side of the valley f...
9.86	Forty Acres -33.296,151.2816 (GR Wyong, 400146)	43 -33	1.8 km 33 mins	Turn left: From the intersection, this walk follows the 'Great North Walk' sign north-east along the clear trail.
11.68	Stringy Bark Point -33.2892,151.2673 (GR Wyong, 387153)	237 -42	1.8 km 53 mins	Veer right: From Stringy Bark Point campsite, this walk heads across the timber and metal footbridge (with a small mossy canyon on your right).
13.51	Int of Great North Walk and Tooheys Road south -33.2799,151.2711 (GR Wyong, 390164)	139 -67	2.3 km 52 mins	Turn left: From the intersection, this walk follows the 'Camping Area' sign north, down along the wide dirt road.
15.81	Int of Old GNW track and Tooheys Rd -33.2625,151.2647 (GR Wyong, 384183)	1 -3	160 m 3 mins	Optional sidetrip to Archers Campsite. Continue straight: From the intersection, this walk follows the GNW arrow post uphill along the wide dirt road.
15.81	Int of GNW and Tooheys Road north -33.2625,151.2647 (GR Wyong, 384183)	106 -174	1.9 km 48 mins	Turn sharp left: From the intersection, this walk follows the 'Yarramalong' sign along the narrow track (away from the dirt road) following a small ridge.
17.72	Powerline tower west of Dead Horse Creek -33.2524,151.2568 (GR Wyong, 376194)	53 -26	1.5 km 30 mins	Continue straight: From the high tension powerline tower, this walk heads uphill along the widening track, initially keeping the tower on your left.
19.26	Int of Great North Walk and Cherry Lane -33.2501,151.2421 (GR Mangrove, 362196)	54 -15	1.4 km 27 mins	Turn right: From the intersection, this walk follows the GNW arrow post gently uphill along Cherry Lane, a gravel road.
20.65	Int of Greta Road and Cherry Lane -33.2378,151.2446 (GR Kulnura, 364210)	29 0	430 m 9 mins	Turn right: From the intersection, this walk follows the 'The Great North Walk' sign gently uphill along the grassy verge (under the power lines) keeping Greta Road just to your left.